

MISSISSIPPI DELTA COMMUNITY COLLEGE



FACT BOOK

A Statistical Profile

2018-2019

DR. TYRONE JACKSON, PRESIDENT

To Our Readers:

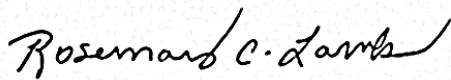
We are pleased to present this year's *Mississippi Delta Community College Fact Book: A Statistical Profile*. This annual publication of the Office of Institutional Effectiveness provides current and accurate information about the College and its governance, faculty and staff, programs, students, facilities, and finances. We hope it serves as a resource for all stakeholders of Mississippi Delta Community College (MDCC).

The information contained in this profile represents contributions from many departments at MDCC. We very much appreciate the assistance and cooperation of individuals in offices such as Admissions, Alumni, Athletics, Business Services, CTE, Computer Services, College Advancement, Financial Aid, Instruction, Library, Public Relations, Student Services, and Workforce Development. Enrollment data presented in this publication are the audited and published numbers of the Mississippi Community College Board, unless otherwise specified.

This year we draw your attention to a few changes that we hope will aid in retrieving information:

- MDCC Facts in Brief (at end of the General Information section)
- Table of Contents
- Section Dividers with Contents

We in the IE Office hope that you find these pages both informative and useful. Please let us know how to continue to improve future editions. For more details and other reports, please visit our website at <http://www.msdelta.edu/institutional-effectiveness>.



Rosemary Lamb, Ph.D.
Associate VP for Institutional Effectiveness



Kate Failing
Director of Institutional Research

Mississippi Delta Community College
Office of Institutional Effectiveness
Boggs-Scroggins #114
Post Office Box 668
Moorhead, MS 38761
Phone: 662-246-6256
Fax: 662-246-6288
ieoffice@msdelta.edu

Mississippi Delta Community College does not discriminate on the basis of race, color, national origin, sex, disability, or age in its programs and activities. The following person has been designated to handle inquiries regarding the non-discrimination policies: The Associate VP for Institutional Effectiveness, Boggs-Scroggins Student Services Center, P.O. Box 668, Moorhead, MS 38761, 662-246-6558

Table of Contents

(NOTE: click on any page title to go there)

GENERAL INFORMATION 1

 Historical Overview of Mississippi Delta Community College 2

 Mission 3

 Goals 3

 Institutional Memberships..... 4

 MDCC Facts in Brief..... 5

GOVERNANCE & ADMINISTRATION..... 9

 Board of Trustees..... 10

 President’s Cabinet 10

 Office of Instruction: Chairs, Deans, Coordinators & Directors..... 11

 College Organizational Chart 12

 Committees of the Board of Trustees..... 13

 Committees of the College 13

 MDCC Development Foundation, Inc. 14

STUDENT INFORMATION 15

 Student Demographics 2018-19 16

 ACT Composite Score Distribution Fall 2018 17

 Average ACT Scores MDCC First-time Freshmen & State 2018 17

 Cumulative GPA of MS Community/Junior College Transfer Students at MS IHL’s by GPA and Rank .. 18

ENROLLMENT TRENDS 19

 Fall Enrollment Profile 5-Year Trend..... 20

 Enrollment by Classification 5-Year Trend with Forecast 21

 Student Enrollment by Classification & Credit Hours Taken 2018-19 21

 Unduplicated Enrollment by Curriculum by Site Fall 2018 22

 Headcount by Site Fall 2018..... 22

 Mississippi Virtual Community College Online Enrollment Data Fall 2017 to Spring 2019 23

 Enrollment by Top 15 High Schools Fall 2018..... 23

 Fall Enrollment by County 2018..... 24

 Fall Enrollment by County 5-Year Trend 25

Fall-to-Spring Enrollment Profile 3-Year Trend..... 26

Total Student Enrollment by Age Group 3-Year Trend 26

Enrollment by Classification of Instructional Program Code Fall 2018..... 27

STUDENT OUTCOMES 29

 Graduation Rates for Full-Time/First-Time (FTFT) Degree-Seeking Freshmen..... 30

 150 % of Normal Time Graduation Rates of FTFT Degree-Seeking Freshmen, plus Transfer-Out Rate . 30

 Degrees Conferred July 1 to June 30 3-Year Trend..... 31

 Total Graduates by Gender and Racial/Ethnic Identity 3-Year Trend..... 31

 Fall-to-Fall Retention Rate of First-Time Students..... 32

 Total Progression 3-Year Trend..... 32

FACULTY AND STAFF 33

 Instructional Faculty by Degree Earned 34

 Staff by Primary Occupational Category 34

 Courses Taught by Delivery by Site 3-Year Trend 35

 Unduplicated Faculty Headcount by Campus 3-Year Trend 35

ADULT BASIC EDUCATION & WORKFORCE DEVELOPMENT 36

 Adult Basic Education Enrollment by County 3-Year Trend..... 37

 Adult Education Percentage Changes 37

 Workforce Development Enrollment by Course 2018-19 38

COLLEGE ADVANCEMENT 39

 Statement of Financial Position 40

 Statement of Functional Expenses..... 41

GENERAL INFORMATION

- HISTORICAL OVERVIEW OF MISSISSIPPI DELTA COMMUNITY COLLEGE
 - MISSION
 - GOALS
- INSTITUTIONAL MEMBERSHIPS
 - MDCC FACTS IN BRIEF

Historical Overview of Mississippi Delta Community College

Sunflower Junior College was founded in connection with the Sunflower Agricultural High School early in 1926, and the first freshman class was enrolled in September 1926. The college was fully accredited as a two-year junior college in April 1928 by the Accrediting Commission of the Senior Colleges of Mississippi. It was admitted to full membership in the Southern Association of Colleges and Schools in December 1930, and is now a member of the American Association of Community and Junior Colleges. The name of the school was officially changed from Sunflower Junior College to Mississippi Delta Junior College at the beginning of the 1960-1961 sessions. In July 1989, the name was once again changed to Mississippi Delta Community College.

Until July 1995, Sunflower, Leflore, Humphreys, Washington, Issaquena, Sharkey, Bolivar, and Coahoma counties supported Mississippi Delta Community College. Coahoma County was excluded from the MDCC district during the 1995 session of the Mississippi Legislature. The college's students come not only from these counties, but also from other Mississippi counties and other states. During the history of the institution, there have been ten superintendents and presidents as follows: B.A. Brady (1911-1913), J.H. Sargent (1913-1918), J.S. Vandiver (1918-1935), P.M. West (1935-1944), W.B. Horton (1944-1966), J.T. Hall (1966-1989), David L. Powe (1989-1992), Bobby Garvin (1992-2001), Larry Bailey (2001-2012), Larry Nabors (2013-2019), and Tyrone Jackson (2019-Present).

From its beginning in 1926, the college has achieved distinction among the junior/community colleges of the state. Its alumni are scattered throughout the United States in positions of trust and leadership.

Mission

Mississippi Delta Community College (MDCC) provides quality education through academic, career, technical, health sciences, and workforce training programs.

MDCC is dedicated to improving the community through intellectual, social, cultural, and recreational opportunities.

Goals

- I. Academic programs of study which lead to the Associate of Arts Degree and/or meet requirements for students who plan to transfer to a senior college or university
- II. Career and technical programs of study which lead to the Associate of Applied Science Degree and/or a certificate, which will qualify students for entry-level employment
- III. Health Science programs of study which lead to the Associate of Applied Science Degree and/or a certificate, which will qualify students for entry-level employment
- IV. Activities and/or facilities which foster productive citizenship, enhance personal growth, enrich quality of life, and promote economic development and partnerships in the communities served by the College
- V. Workforce training for business and industry to enhance knowledge and skills
- VI. Continuing and adult basic education for personal growth
- VII. College infrastructure in support of student services, instructional programs, administrative processes, and community services

Institutional Memberships

Mississippi Delta Community College maintains institutional membership in the following:

- American Association of Community Colleges (AACC)
- Council for Higher Education Accreditation (CHEA)
- Commission on Accreditation in Physical Therapy Education (CAPTE)
- Greenwood Leflore County Chamber of Commerce
- Hinds Community College Foundation
- Indianola Chamber Main Street
- Joint Review Committee on Education in Radiologic Technology (JRCERT)
- MS Association Community & Junior Colleges (MACJC)
- MS Association of Colleges & Universities (MAC)
- MS Banner Users Group (MBUG)
- MS Council of ADN Programs
- MS Council of Deans & Directors of Schools of Nursing
- MS Institute of Arts & Letters
- National Accrediting Agency for Clinical Laboratory Sciences (NAACLS)
- National Association of College and University Business Officers (NACUBO)
- National Council of Teachers of English (NCTE)
- Organization for Associate Degree Nursing (OADN)
- Southern Association of Colleges and Schools Commission on Colleges (SACSCOC)
- Southern Association of Colleges with Associate Degrees (SACAD)

Source: Office of Business Services, July 2019

MDCC Facts in Brief

Type: Founded in 1926, Mississippi Delta is a comprehensive open-access two-year community college offering university transfer arts and sciences, career-technical education, allied health degrees and certificates, workforce development, and adult basic education.

Location: MDCC's main campus comprises 250 acres with 23 buildings and three varsity sports fields in the town of Moorhead, centered in the culturally rich Mississippi Delta National Heritage Area. It is only 10 miles from Indianola*, 22 miles from Greenwood*, 31 miles from Greenville* and Cleveland, 49 miles from Yazoo City, and 104 miles from the state capital of Jackson. *MDCC instructional sites also available in these communities.

Accreditation: Mississippi Delta Community College is accredited by the Southern Association of Colleges and Schools Commission on Colleges to award the Associate of Arts degree, the Associate of Applied Science degree, and career and technical certificates. Questions about the accreditation of Mississippi Delta Community College may be directed to the SACS Commission on Colleges at 1866 Southern Lane, Decatur, Georgia 30033-4097 or call 404-679-4500.

Full-Time Enrollment (Fall 2018):

- Total: 2,325; 63% female, 37% male
- Students of color: 69% (N=1607)
- Mississippi counties represented: 62
- Top five counties represented (% of in-state enrollment): Washington (34%), Leflore (19%), Sunflower (16%), Bolivar (12%), Humphreys (6%)
- Students from out-of-state: 107 (5%); states represented: 13
- Top five states besides Mississippi: Arkansas, Louisiana, Alabama, Florida & Georgia (tie)
- Student-faculty ratio is 23:1; average class size is 16 students

Admissions (Fall 2018): 3,102 applicants, 2,038 admitted (66% acceptance rate), 1,535 enrolled. *Source: OLAP dashboard*

Retention and Graduation:

- Full-time retention rate (Fall 2017 entering cohort): 50%
- Graduation rate within 150% of normal time (Fall 2014 entering cohort): 36%

Source: IPEDS

Degrees Conferred (2018-19 Academic Year): Of 760 graduates, 347 students earned Associate of Arts degrees, 232 earned Associate of Applied Science degrees, and 181 earned Technical or Career Certificates.

Degree Programs: MDCC offers 20 Associate of Arts meta-majors, 11 Associate of Applied Science programs, 13 career and 13 technical certificates. Recently approved majors include Entertainment Industry Studies, Elementary/Secondary Education, Industrial Maintenance Technology, and Physical Therapy Assistant Technology.

- University transfer common majors in 2018: Pre-Allied Health (29.2%), General Studies (28.6%), Business (7.0%), Social Sciences (5.7%), Pre-Health Professions (4.8%)
- Career-technical common majors in 2018: Electrical Technology (11.0%), HVAC (10.4%), Automotive Mechanics Technology (8.3%), Industrial Maintenance Technology (6.4%)
- Health science common majors in 2018: Registered Nursing (39%), Radiologic Technology (16.0%), Practical Nursing (15.5%), Dental Hygiene (8.8%), Medical Laboratory Technology (8.0%)

Career-Technical Education: The following national industry-recognized credentials are offered for these programs:

- Autodesk: Drafting and Design
- Automotive Service Excellence (ASE): Automotive Mechanics Technology
- National Center for Construction Education and Research (NCCER): Construction Equipment Operation, Electrical Technology, HVAC, Industrial Maintenance Technology, Masonry, Welding
- Office Proficiency Assessment & Certification (OPAC): Business and Office Technology

Health Science Pass Rates: Students in the following programs achieved noteworthy pass rates for state licensure examinations in 2018-19:

- Associate Degree Nursing: 100% for all writes, 91% for first write
- Dental Hygiene: 100% for first write
- Practical Nursing: 88% for first write
- Radiologic Technology: 85% for first write

Source: Office of Instruction, September 2019

Faculty (Fall 2018): Among the full-time faculty members,

- 67% are female; 33% are male.
- 13% are faculty of color.
- 6% have earned a doctorate or highest degree in their field.
- 57% have 10+ years of service at MDCC.

Source: Office of Instruction, July 2019

Honor Societies: MDCC has chapters of Phi Theta Kappa (international honor society of two-year colleges), Alpha Delta Nu (organization for associate degree nursing honor society), and Lambda Nu (national honor society for radiologic and imaging services).

Special Programs: Academically gifted students gain an educational experience beyond the standard curriculum in MDCC's Honors College, an environment that promotes discovery and creativity. The Student Success Initiative offers all students intensive, personalized support through its coaching and tutoring services, plus enrichment and service-learning activities.

Residential Life (Fall 2018): 17% of MDCC students chose to live on the Moorhead campus in Hargett-Lee Women's Residence Hall ($N=216$, 14% of female students) or Edwards-Stonestreett Men's Residence Hall ($N=198$, 23% of male students). *Source: OLAP dashboard*

Student Activities: MDCC has several performing groups that offer students a talent scholarship and the opportunity to represent the school throughout the district and state. Performing groups include the Ambassadors show choir, the Delta Dancers, the MDCC Cheerleaders, and the Spirit of the Delta Band. General clubs and organizations include ART club, Phi Beta Lambda business major association, Skills USA career-technical partnership, the Retrospect yearbook, a Student Government Association, and Delta Connection, whose members learn leadership skills through representing the college.

Library: The Mississippi Delta Library System maintains full-service libraries on each of its three campuses. The library collection contains over 30,000 volumes; over 430 audio books; and over 1,300 DVDs, as well as print journals and newspapers. In addition, the library provides access to 73 online databases containing over 250,000 e-books; over 37,000 streaming videos; and 18 online journals. There are 136 computers available for students' use among the three campuses. The library also provides a 24/7 reference service that allows students to ask questions and get answers, in real time.

Facilities & Resources: MDCC is proud to offer students the Jack E. Harper, Jr. Science Building, a 26,700 sq. ft. complex housing nine classrooms and eight laboratories with state-of-the-art technology to support the instruction of physical and biological sciences and mathematics; the J. T. Hall Coliseum with seating for 1,000 and attached dance studio and field house; modernized automotive mechanics technology shops; facilities for fine arts and music including the M. E. Tharp auditorium and Merle Tolbert Piano Lab; a John Deere 6195R for agriculture classes; the J. S. Vandiver Student Union equipped with conference space, student lounge, grill, and workout facility; the Student Success Initiative writing center and onsite tutoring; counseling services at all locations; a 3,200 sq. ft. dental hygiene clinic providing free service for all students; and high-speed wireless internet access throughout campus.

Athletics: As a member of the Mississippi Association of Community and Junior Colleges (MACJC), Mississippi Delta Community College sponsors five varsity sports (three for men and two for women) that compete in the National Junior College Athletic Association (NJCAA) Division II intercollegiate level, along with a variety of recreational athletic activities. Mississippi Delta holds one national championship in football.

Endowment Assets (End of Fiscal Year 2017): \$10,000. *Source: IPEDS*

Net position (End of Fiscal Year 2017): \$23,834,051. *Source: IPEDS*

Total Operating Expenditures (Fiscal Year 2017): \$31,405,866. *Source: IPEDS*

College Advancement:

- Public Relations launched new institution-wide MDCC website and received statewide recognition at the College Public Relations Association of Mississippi Awards, 2019.
- Foundation provided over \$114,000 in scholarships to 467 students, over \$5000 in book loan assistance to 40 students, nearly \$13,000 in emergency student support funds, and instructional support for the year ending June 30, 2018.
- Alumni events provided opportunities for fellowship and continued college support through such projects as purchase of sports team equipment.

Source: Office of Advancement, August 2019

GOVERNANCE & ADMINISTRATION

- BOARD OF TRUSTEES
- PRESIDENT'S CABINET
- OFFICE OF INSTRUCTION: CHAIRS, DEANS, COORDINATORS & DIRECTORS
 - COLLEGE ORGANIZATIONAL CHART
- COMMITTEES OF THE BOARD OF TRUSTEES
 - COMMITTEES OF THE COLLEGE
- MDCC DEVELOPMENT FOUNDATION, INC.

Board of Trustees

Fletcher Clark, Chair	Sunflower County
Katherine Tankson, Secretary	Sharkey County
Lawrence Browder	Humphreys County
Miskia Davis	Sunflower County
Frank Dantone	Washington County
Maurine Gray	Bolivar County
Dr. Peter Jackson	Sharkey County
Robert Jones	Issaquena County
B.J. Nichols	Issaquena County
Desiree Norwood	Sunflower County
Dottie Pernell	Leflore County
Krystaline Sample	Sunflower County
Martha Sibley	Sunflower County
Julia Thomas	Washington County
Mickey Thompson	Bolivar County
<i>Vacant Seat</i>	<i>Sunflower County</i>
Richard Noble	Board Attorney

Source: President's Office, August 2019

President's Cabinet

Dr. Tyrone Jackson	President
D. Reed Abraham	Associate Vice President for College Advancement and Public Relations
Debra Baker	Executive Assistant to the President
Linda Clark	Dean of Greenville Higher Education Center (GHEC) Operations
Todd Donald	Vice President of Workforce and Economic Development
Steven Jones	Vice President for Administrative Services
Dr. Rosemary Lamb	Associate Vice President of Institutional Effectiveness
Marsha Lee	Vice President of Business Services
Dr. Edward Rice	Vice President of Student Services / Campus Police / Law Enforcement Training Academy
Jeff Tatum	Athletic Director / Head Football Coach
Teresa Webster	Vice President of Instruction

Source: President's Office, July 2019

Office of Instruction: Chairs, Deans, Coordinators & Directors

Academic Division Chairs

Business	Teresa Webster
College Prep, Life Skills & Education	Dawn Herring
English	Renee Moore
Fine Arts	Jennifer Woodard
Health, Physical Education, Recreation (HPR)	Burnadette McDonald (Interim)
Math & Science	Debbie Gantz
Social Sciences	Allyson Lofton

Dean of Career-Technical & Adult Education

Suzanne Thompson

Dean of Health Sciences

Patricia Kelly

Director of Nursing

Denise Gardner

Chair of Associate Degree Nursing

Traci Beckham

Program Director of Dental Hygiene Technology

Catherine Dunn

Program Director of Medical Laboratory Technology

Janet Cooper

Program Director of Physical Therapy Assistant Technology

Carmen Oguz

Program Director of Radiologic Technology

Christie Kisner

Advising Coordinator

Audra Perry

eLearning Coordinator

Brenda Bridgers

Library Director

Kristy Bariola

Dual Enrollment Coordinator

Claire Green

Dean of Greenville Higher Education Center (GHEC) Operations

Linda Clark

Director of Greenwood Center

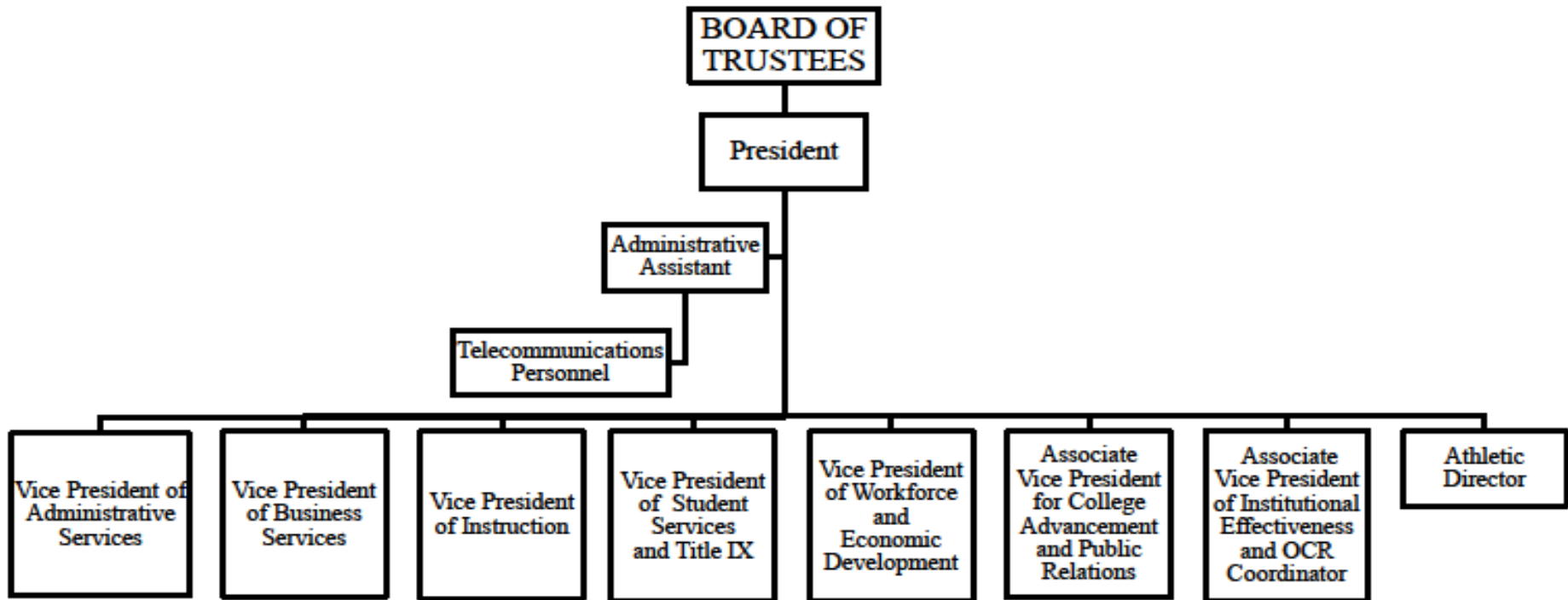
Mary Joseph

Office of Instruction Administrative Assistant

Erica Pruett

Source: Office of Instruction, July 2019

College Organizational Chart



Source: President's Office, August 2019

Committees of the Board of Trustees

Building	Policy Review
Finance	President Evaluation
Housing	Presidential Salary Review
Legal Advisory	President Search
Naming of Buildings	Workforce Development

Source: President's Office, July 2019

Committees of the College

Admissions and Records	Library
Benefits	MDCC Development Foundation Scholarship
Budget	Mission Statement Review
College Calendar	Non-Instructional Grievance
College Catalog/Handbook	Orientation
College Curriculum	Policies and Procedures
Crisis Response	Quality Enhancement Plan Implementation
Delta Fit	Robert W. Steinriede Faculty and
Emergency Fund	Staff Development Fund Selection
Facilities	Staff Appreciation
Institutional Effectiveness	Standing Committee on Honors & Awards
Instructional Grievance	Strategic Planning
IPEDS, 2017	Technology

Source: Office of Institutional Effectiveness, June 2019

MDCC Development Foundation, Inc.

Randy Randall, Chair	Tom Gresham
Frank Dantone, Vice-Chair	Jack Harris
Doug Russell, Treasurer	James Henderson
Holt Lowe, Secretary	B. J. Nichols
D. Reed Abraham, Executive Director	John Pittman
Turner Arant	Dr. Edward Rice
Curtis Buchanan	Elyette Robertson
Lora Dean	Stafford Shurden
Dr. Darren Edwards	Jonny Spivey

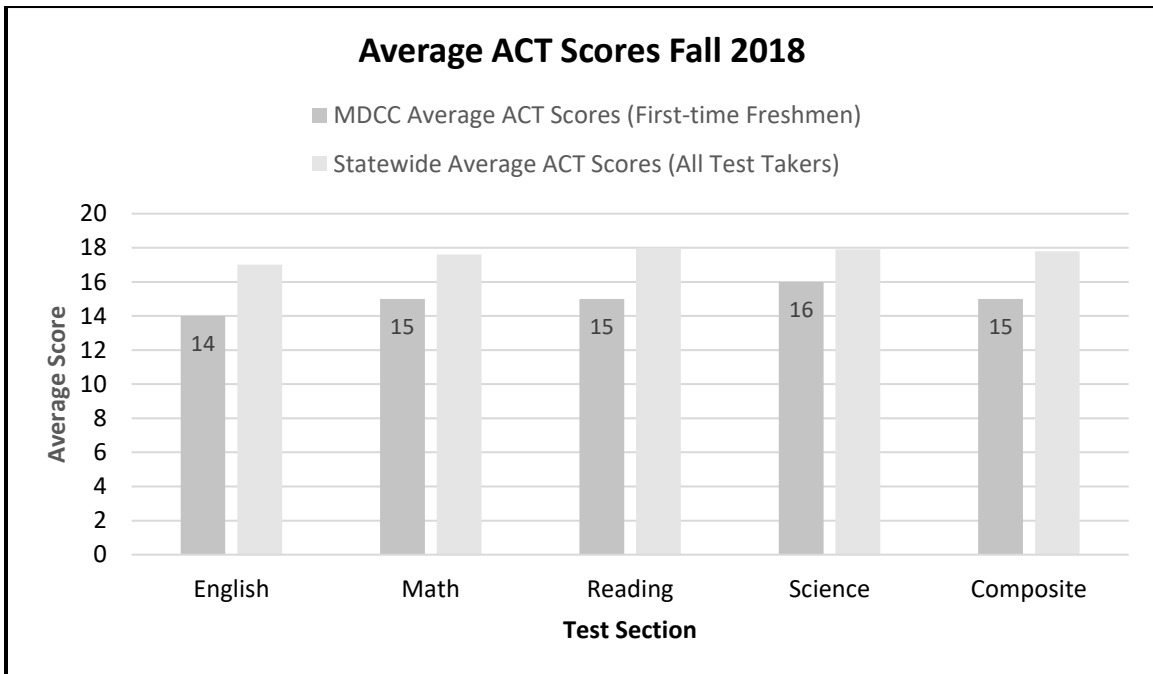
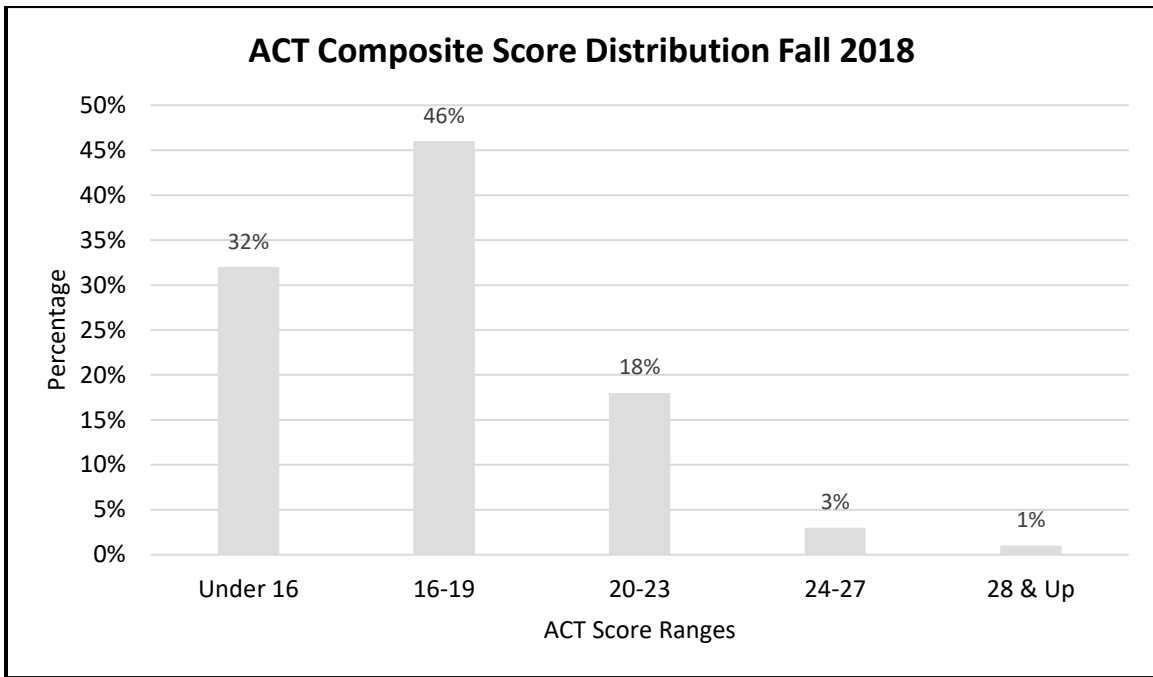
Source: MDCC Development Foundation, Inc., August 2019

STUDENT INFORMATION

- STUDENT DEMOGRAPHICS
 - ACT COMPOSITE SCORE DISTRIBUTION
 - AVERAGE ACT SCORES MDCC FIRST-TIME FRESHMEN & STATEWIDE
- CUMULATIVE GPA OF CC TRANSFER STUDENTS AT MS IHL'S BY GPA AND RANK

Student Demographics 2018-19

	Fall 2018	Spring 2019
Racial / Ethnic Identity		
Black	1559	1381
White	646	685
Hispanic	37	36
Other & Unclassified	83	88
Gender Identity		
Female	1468	1408
Male	857	779
Unclassified	0	3
College		
Academic	1536	1383
Technical	252	227
Career	201	153
Non-Degree Seeking	336	427
Residency		
In-District Mississippi Resident	1995	1866
Out-of-District Mississippi Resident	254	245
Non-Resident	76	79
Age Distribution		
Under 18	293	266
18-24	1679	1607
25 & Over	353	317
TOTAL	2325	2190



Cumulative GPA of MS Community/Junior College Transfer Students at MS IHL's by GPA and Rank

Mississippi Institutions of Higher Learning Transfer GPA Report AY 2019 Office of Strategic Research GPA at Graduation						
Institution	2015	2016	2017	2018	2019	<i>RANK in 2019</i>
Coahoma Community College	3.12	3.14	3.08	3.05	3.02	15
Copiah-Lincoln Community College	3.19	3.20	3.18	3.18	3.15	9
East Central Community College	3.22	3.29	3.34	3.34	3.32	1
East Mississippi Community College	3.09	3.07	3.10	3.12	3.13	12
Hinds Community College	3.10	3.11	3.12	3.11	3.15	9
Holmes Community College	3.10	3.15	3.17	3.17	3.18	8
Itawamba Community College	3.19	3.19	3.26	3.26	3.24	3
Jones County Junior College	3.13	3.21	3.12	3.19	3.12	13
Meridian Community College	3.26	3.24	3.28	3.23	3.25	2
Mississippi Delta Community College	3.16	3.24	3.19	3.14	3.24	3
MS Gulf Coast Community College	3.14	3.18	3.15	3.20	3.20	7
Northeast MS Community College	3.23	3.27	3.25	3.22	3.24	3
Northwest MS Community College	3.14	3.10	3.19	3.19	3.14	11
Pearl River Community College	3.15	3.03	3.09	3.16	3.11	14
Southwest MS Community College	3.14	3.31	3.26	3.22	3.23	6
All MS CJs	3.15	3.17	3.18	3.19	3.18	
All IHL graduates	3.11	3.14	3.15	3.17	3.16	

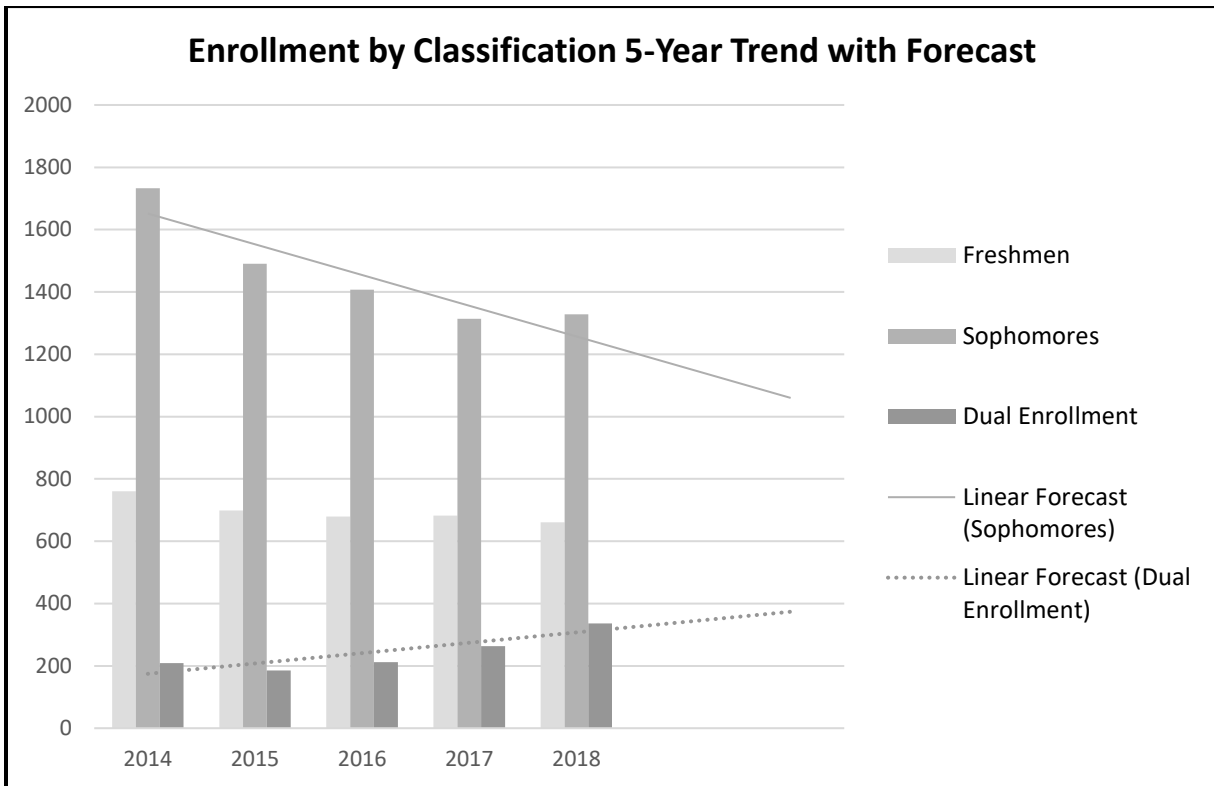
Source: MS IHL Office of Strategic Research, August 2019

ENROLLMENT TRENDS

- FALL ENROLLMENT PROFILE 5-YEAR TREND
- ENROLLMENT BY CLASSIFICATION 5-YEAR TREND WITH FORECAST
- STUDENT ENROLLMENT BY CLASSIFICATION & CREDIT HOURS TAKEN
 - UNDUPLICATED FALL ENROLLMENT BY CURRICULUM BY SITE
 - FALL HEADCOUNT BY SITE
 - MSVCC ONLINE ENROLLMENT DATA FALL & SPRING 2-YEAR
 - ENROLLMENT BY TOP 15 HIGH SCHOOLS
 - FALL ENROLLMENT BY COUNTY
 - FALL ENROLLMENT BY COUNTY 5-YEAR TREND
 - FALL-TO-SPRING ENROLLMENT PROFILE 3-YEAR TREND
- TOTAL STUDENT ENROLLMENT BY AGE GROUP 3-YEAR TREND
- ENROLLMENT BY CLASSIFICATION OF INSTRUCTIONAL PROGRAM CODE

Fall Enrollment Profile 5-Year Trend

	Fall 2014		Fall 2015		Fall 2016		Fall 2017		Fall 2018	
	#	%	#	%	#	%	#	%	#	%
Gender										
Female	1655	61%	1462	62%	1424	62%	1402	62%	1468	63%
Male	1047	39%	912	38%	872	38%	857	38%	857	37%
Unknown	X	X	X	X	2	0%	0	0%	0	0%
Race/Ethnicity										
Black	1678	62%	1503	63%	1476	64%	1463	65%	1559	67%
White	939	35%	762	32%	693	30%	668	30%	646	28%
Hispanic	X	X	X	X	41	2%	47	2%	37	2%
Asian	X	X	X	X	16	1%	12	1%	8	0%
Am. Indian	X	X	X	X	3	0%	2	0%	3	0%
Hawaii/Pacific	X	X	X	X	0	0%	0	0%	0	0%
2+ Races	X	X	X	X	0	0%	0	0%	0	0%
Unknown	X	X	X	X	69	3%	67	3%	72	3%
Other	85	3%	109	5%	X	X	X	X	X	X
Enrollment Status										
Full-Time	2083	77%	1862	78%	1789	78%	1700	75%	1709	74%
Part-Time	619	23%	512	22%	509	22%	559	25%	616	26%
Classification										
Freshman	760	28%	699	29%	679	30%	682	30%	661	28%
Sophomore	1733	64%	1490	63%	1407	61%	1314	58%	1328	57%
Dual Enrolled	209	8%	185	8%	212	9%	263	12%	336	14%
College										
Academic	1917	71%	1650	70%	1591	69%	1584	70%	1536	66%
Technical	251	9%	231	10%	221	10%	248	11%	252	11%
Career	247	9%	247	10%	255	11%	159	7%	201	9%
Non-Degree	287	11%	246	10%	231	10%	268	12%	336	14%
Residency										
In-District	2337	86%	2039	86%	1948	85%	1963	87%	1995	86%
Out-of-District	365	14%	335	14%	254	11%	226	10%	254	11%
Out-of-State	X	X	X	X	90	4%	70	3%	75	3%
Out-of-Country	X	X	X	X	6	0%	0	0%	1	0%
Total Headcount	2702	100%	2374	100%	2298	100%	2259	100%	2325	100%



Student Enrollment by Classification & Credit Hours Taken 2018-19

	Fall 2018	Spring 2019
Classification		
Freshman	661	119
Sophomore	1328	1653
Dual Enrollment	336	418
Credit Hours Taken		
1-5	324	434
6-11	292	338
12+	1709	1418
TOTAL	2325	2190

Unduplicated Enrollment by Curriculum by Site Fall 2018

Campus	Academic	Technical	Career	Non-Degree	TOTAL
Main Campus	1440	238	186	148	2012
Greenville Higher Education Center	65	0	13	21	99
Greenwood Center	31	14	2	4	51
Dual Enrollment High School Sites	0	0	0	163	163
TOTAL	1536	252	201	336	2325

Note: "Unduplicated" here means students taking courses at more than one site are counted only once for the location at which the majority of courses are taken. Online numbers combined with Main Campus.

Headcount by Site Fall 2018

Campus	Headcount
Main Campus	1397
Greenville Higher Education Center	294
Greenwood Center	171
VCC (Statewide-hosted online)	778
Online (Non-VCC online)	712

Note: "Headcount" here means students taking courses at more than one site are counted at each location.

Source: OLAP Dashboard

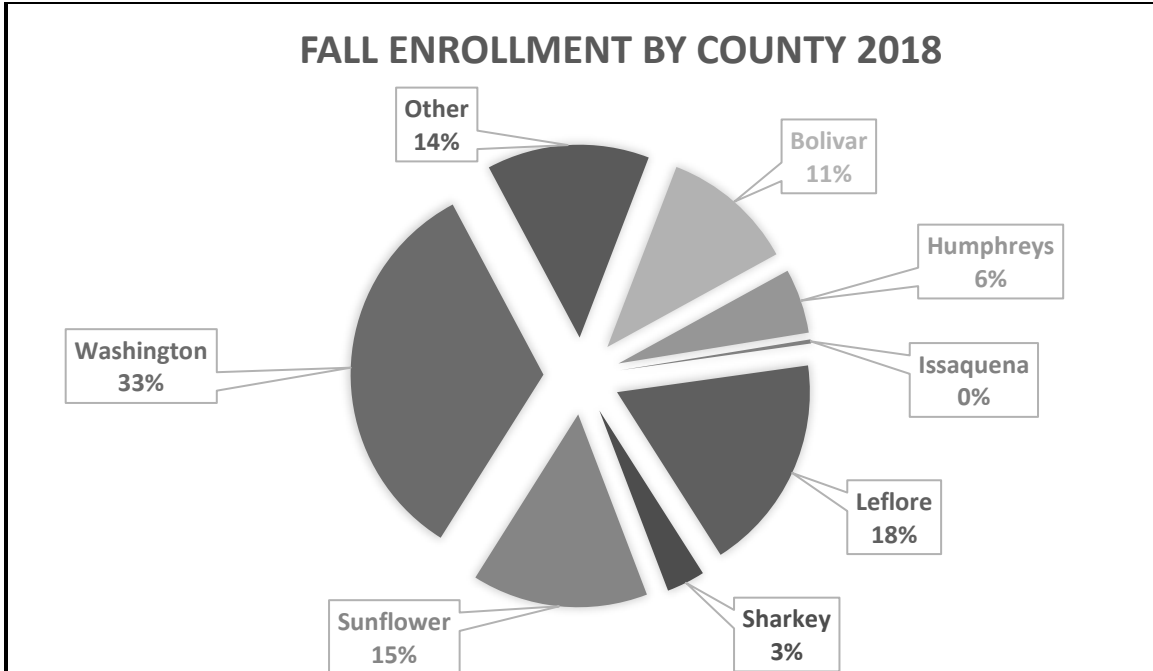
Mississippi Virtual Community College Online Enrollment Data Fall 2017 to Spring 2019

Session & Year	Courses Provided	Sections Provided	Sections Hosted	# of Instructors	Non-Duplicated Head Count	Average # of Classes Taken by Each Student	Total # of Seats Provided / Class Entries
Fall 2017	81	223	142	43	730	2.41	1967
Spring 2018	77	202	125	40	791	2.18	1922
Fall 2018	79	192	113	42	783	2.41	2182
Spring 2019	80	182	102	43	880	2.25	2174

Source: Office of eLearning, August 2019

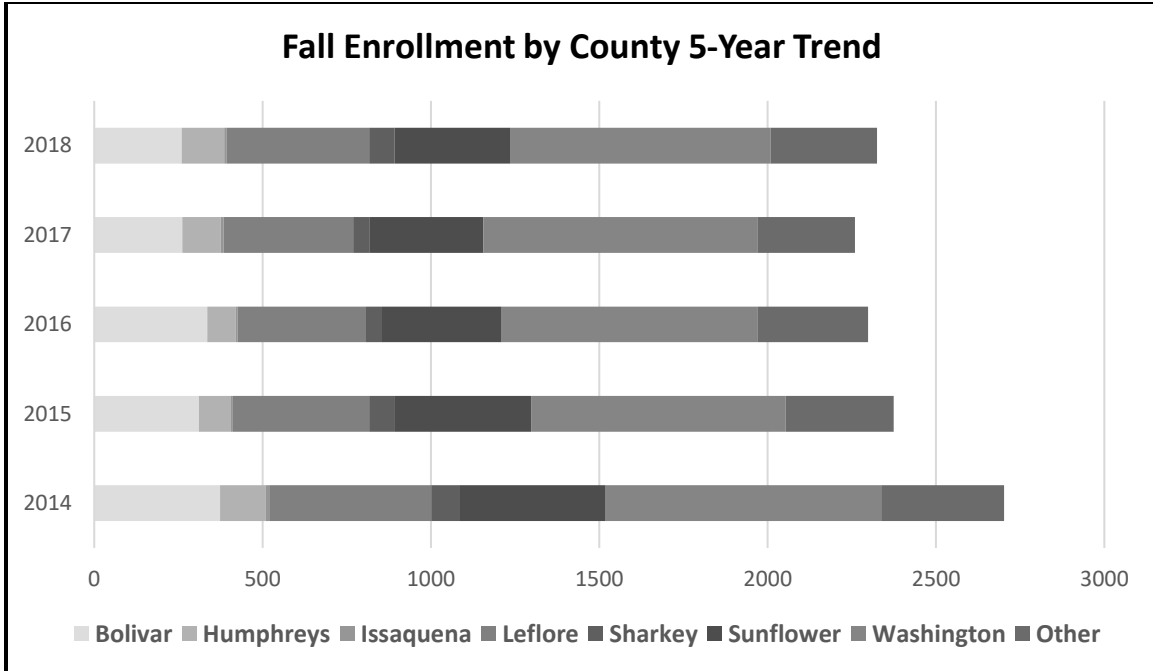
Enrollment by Top 15 High Schools Fall 2018

High School	County	Count
Greenville-Weston High School	Washington	241
Greenwood High School	Leflore	189
Gentry High School	Sunflower	146
Cleveland Central High School	Bolivar	126
Norma C. O'Bannon High School	Washington	94
Humphreys County High School	Humphreys	86
Riverside High School	Washington	78
Ruleville Central High School	Sunflower	76
Leland High School	Washington	64
Amanda Elzy High School	Leflore	62
South Delta High School	Sharkey	54
Indianola Academy	Sunflower	46
Pillow Academy	Leflore	42
St. Joseph Catholic School	Washington	42
Leflore County High School	Leflore	38
Bayou Academy	Bolivar	36



Fall Enrollment by County 2018

County	Enrollment Fall 2018
Bolivar	260
Humphreys	126
Issaquena	8
Leflore	423
Sharkey	75
Sunflower	343
Washington	773
Other	317
Total	2325



Fall Enrollment by County 5-Year Trend

	Fall 2014	Fall 2015	Fall 2016	Fall 2017	Fall 2018
Bolivar	374	311	336	262	260
Humphreys	135	95	84	114	126
Issaquena	13	6	6	8	8
Leflore	479	405	381	385	423
Sharkey	83	74	48	50	75
Sunflower	435	407	355	337	343
Washington	818	755	759	813	773
Other	365	321	329	290	317
Total	2702	2374	2298	2259	2325

Fall-to-Spring Enrollment Profile 3-Year Trend

	2016-2017		2017-2018		2018-2019	
	Fall	Spring	Fall	Spring	Fall	Spring
Gender						
Female	1424	1346	1402	1326	1468	1408
Male	872	816	857	747	857	779
Unknown	2	1	0	0	0	3
Race/Ethnicity						
Black	1476	1343	1463	1310	1559	1381
White	693	700	668	657	646	685
Hispanic	41	40	47	36	37	36
Other	85	80	81	70	83	88
Classification						
Freshman	679	158	682	140	661	119
Sophomore	1407	1712	1314	1658	1328	1653
Dual Enrolled	212	293	263	273	336	418
College						
Academic	1591	1472	1584	1447	1536	1383
Technical	221	217	248	207	252	227
Career	255	163	159	138	201	153
Non-Degree	231	311	268	281	336	427
Total Headcount	2298	2163	2259	2073	2325	2190

Total Student Enrollment by Age Group 3-Year Trend

	15-17	18-19	20-21	22-24	25-29	30-34	35-39	40-49	50-64	65+
Fall 2016	203	937	521	284	156	78	44	55	19	1
Fall 2017	252	926	512	230	139	72	36	60	28	4
Fall 2018	293	956	504	219	163	62	46	48	32	2

Enrollment by Classification of Instructional Program Code Fall 2018

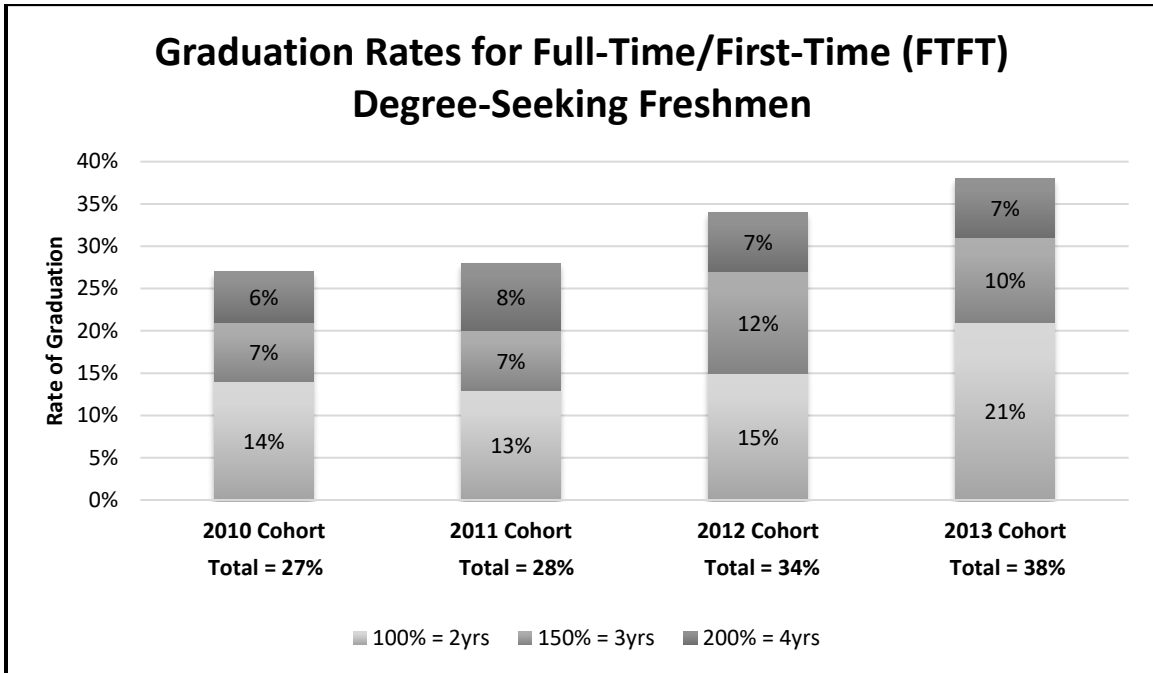
CIP	PROGRAM	ACADEMIC	TECHNICAL	CAREER	NON-DEGREE	ALL
10304	Crop Production	0	16	5	0	21
11105	Plant Protection and Integrated Pest Management	0	6	0	0	6
40200	Architecture	4	0	0	0	4
90000	Communication, Journalism, and Related Programs	13	0	0	0	13
110701	Computer Science	22	0	0	0	22
120500	Culinary Arts and Related Services	0	14	2	0	16
131202	Elementary Teacher Education	38	0	0	0	38
131205	Secondary Teacher Education	4	0	0	0	4
140100	Engineering, General	30	0	0	0	30
151301	Drafting and Design Technology/Technician, General	0	17	2	0	19
231300	Rhetoric and Composition/Writing Studies	9	0	0	0	9
240100	Liberal Arts and Sciences, General Studies and Humanities	1022	0	0	0	1022
260100	Biology, General	51	0	0	0	51
270100	Mathematics	2	0	0	0	2
310500	Health and Physical Education/Fitness	50	0	0	0	50
400500	Chemistry	10	0	0	0	10
430100	Criminal Justice and Corrections	26	0	0	0	26
460101	Mason/Masonry	0	0	16	0	16
460302	Electrician	0	29	7	0	36
470101	Electrical/Electronics Equipment Installation and Repair, General	0	1	0	0	1
470201	Heating, Air Conditioning, Ventilation and Refrigeration Maintenance Technology/Technician	0	0	34	0	34
470303	Industrial Mechanics and Maintenance Technology	0	4	17	0	21
470604	Automobile/Automotive Mechanics Technology/Technician	0	30	11	0	41
470615	Engine Machinist	0	0	18	0	18
480501	Machine Shop Technology Assistant	0	14	1	0	15
480508	Welding Technology/Welder	0	0	17	0	17
...CONTINUED...						

CIP	PROGRAM	ACADEMIC	TECHNICAL	CAREER	NON-DEGREE	ALL
490202	Construction/Heavy Equipment /Earthmoving Equipment Operation	0	0	19	0	19
500700	Fine and Studio Art	24	0	0	0	24
500900	Music	16	0	0	0	16
500999	Music, Other	3	0	0	0	3
510602	Dental Hygiene/Hygienist	0	21	0	0	21
510911	Radiologic Technology/Science - Radiographer	0	37	0	0	37
511004	Clinical/Medical Laboratory Technician	0	23	0	0	23
513800	Registered Nursing, Nursing Administration, Nursing Research and Clinical Nursing	103	0	0	0	103
513901	Licensed Practical/Vocational Nurse Training	0	0	36	0	36
513902	Nurse/Nursing Assistant/Aide and Patient Care Assistant	0	0	13	0	13
520100	Business/Commerce, General	98	0	0	0	98
520201	Business Administration & Management, General	0	16	0	0	16
520302	Accounting Technology/Technician and Bookkeeping	0	8	0	0	8
520401	Administrative Assistant and Secretarial Science, General	0	16	3	0	19
540000	History	11	0	0	0	11
999999	Undecided	0	0	0	336	336
TOTALS		1536	252	201	336	2325

Source: IPEDS

STUDENT OUTCOMES

- GRADUATION RATES FOR FULL-TIME, FIRST-TIME (FTFT) DEGREE-SEEKING FRESHMEN
- 150% TIME GRADUATION RATES OF FTFT, DEGREE-SEEKING FRESHMEN & TRANSFERS
 - DEGREES CONFERRED 3-YEAR TREND
- TOTAL GRADUATES BY RACIAL/ETHNIC IDENTITY & GENDER 3-YEAR TREND
 - FALL-TO-FALL RETENTION RATE OF FIRST-TIME STUDENTS
 - TOTAL PROGRESSION 3-YEAR TREND



Source: IPEDS

150 % of Normal Time Graduation Rates of FTFT Degree-Seeking Freshmen, plus Transfer-Out Rate

2014 COHORT	GRADUATION RATE %
Gender	
Men	39%
Women	33%
Racial/Ethnic Identity	
Asian	0%
Black or African American	33%
Hispanic or Latino	55%
White	44%
Race/ethnicity unknown	60%
Transfer out-rate	5%
Overall Graduation Rate	36%

Source: IPEDS

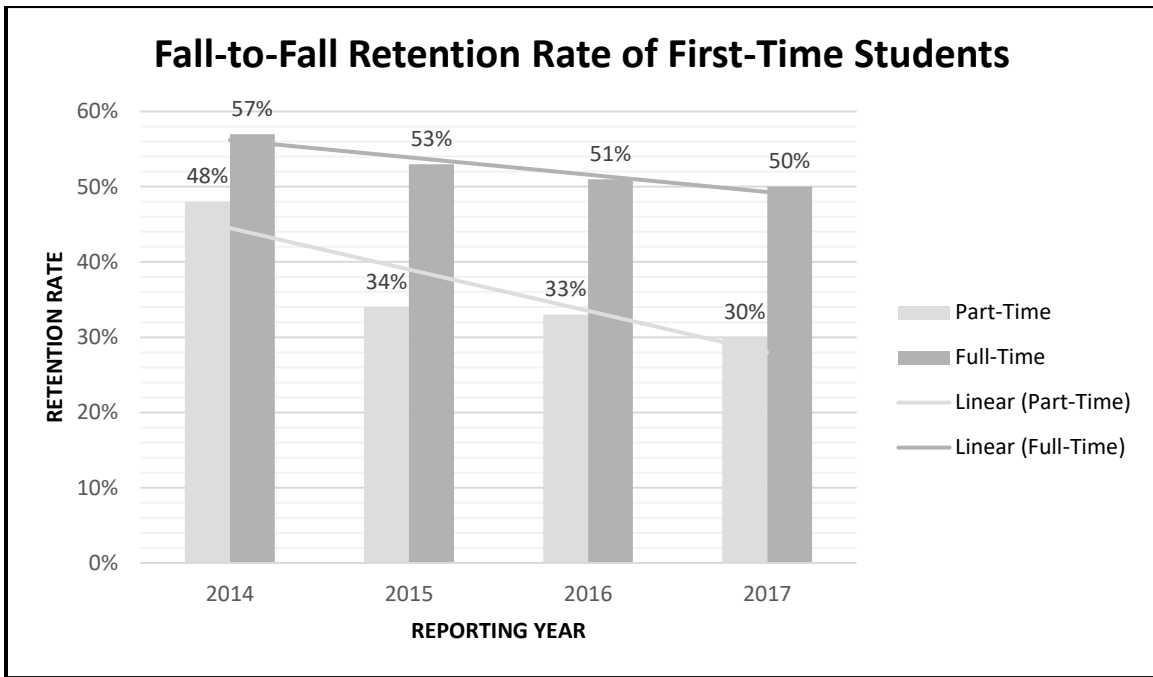
**Degrees Conferred July 1 to June 30
3-Year Trend**

YEAR	DEGREES CONFERRED			TOTAL
	AA: Associate of Arts	AAS: Associate of Applied Science	Certificate: 1-YR Career & 2-YR Technical	
July 1 – June 30				
2016-17	265	187	191	643
2017-18	338	189	176	703
2018-19	347	232	181	760

Source (both charts this page): Graduates Dashboard, August 2019

**Total Graduates by Gender and Racial/Ethnic Identity
3-Year Trend**

CATEGORY	DEGREES CONFERRED July 1 – June 30		
	2016-17	2017-18	2018-19
GENDER			
Male	270	290	281
Female	373	413	479
RACIAL/ETHNIC IDENTITY			
Asian	12	4	7
Black or African American	386	390	476
Hispanic or Latino	11	13	15
White	226	285	248
Other Race/Ethnicity	8	11	14



Source: IPEDS

Total Progression 3-Year Trend

	FALL 2015 (2013 Cohort)		FALL 2016 (2014 Cohort)		FALL 2017 (2015 Cohort)	
	COUNT	%	COUNT	%	COUNT	%
	First-Time Part-Time Students	27	—	15	—	15
Earned 24 Credit Hours by End Year 2	3	11.1%	1	6.7%	1	6.7%
First-Time Full-Time Students	516	—	582	—	582	—
Earned 42 Credit Hours by End Year 2	190	36.8%	233	40.0%	233	40.0%

Source: MS State Report Cards

FACULTY AND STAFF

- INSTRUCTIONAL FACULTY BY DEGREE EARNED
- STAFF BY PRIMARY OCCUPATIONAL CATEGORY
- COURSES TAUGHT BY DELIVERY BY SITE 3-YEAR TREND
- UNDUPLICATED FACULTY HEADCOUNT BY CAMPUS 3-YEAR TREND

Instructional Faculty by Degree Earned 2018-19

DEGREE (highest reported)	Full-Time Faculty	Part-Time Faculty
Doctoral	6	4
Master's	64	31
Bachelor's	12	6
Associate's	10	3
Certificate	0	3
High School Diploma	1	0
Unreported	1	1

Source: Office of Instruction, August 2019

Staff by Primary Occupational Category Fall 2017

Occupational Category	Full-Time	Part-Time	TOTAL
Instructional Staff	100	64	164
Librarians/Library Technicians	7	1	8
Student and Academic Affairs	11	0	11
Management	13	1	14
Business & Financial Operations	6	0	6
Computer, Engineering, Science	7	0	7
Community Service, Legal, Arts, Media	12	6	18
Healthcare Practitioners	1	0	1
Service Occupations	41	18	59
Sales & Related Occupations	2	1	3
Office & Administrative Support	45	12	57
Production, Transportation, Material Moving	0	2	2
TOTAL	245	105	350

Source: IPEDS

Courses Taught by Delivery by Site 3-Year Trend

SITE	Fall 2016		Fall 2017		Fall 2018	
	Campus	MSVCC	Campus	MSVCC	Campus	MSVCC
Baxters	0	1	0	0	0	0
Bayou Academy	1	0	0	0	0	0
Cleveland Vo-Tech Center	2	0	0	0	0	0
Golden Age Nursing Home	4	0	4	0	4	0
Greenville High School	0	0	0	0	1	0
Greenville Higher Ed Center	97	0	94	0	78	0
Greenwood Center	71	0	64	0	58	0
Greenwood High School	4	0	5	0	5	0
Indianola Academy	3	0	3	0	3	0
Leland High School	0	0	1	0	0	0
Moorhead	398	73	387	78	373	76
Pillow Academy	1	0	1	0	1	0
St. Joseph High School	2	0	2	0	2	0
Washington School	5	0	7	0	7	0

Unduplicated Faculty Headcount by Campus 3-Year Trend

SITE	Fall 2016		Fall 2017		Fall 2018	
	Full-Time	Part-Time	Full-Time	Part-Time	Full-Time	Part-Time
Greenville	6	4	6	3	5	2
Greenwood	5	6	5	6	5	4
Drew	1	3	1	0	2	0
Moorhead	82	37	75	36	76	30
TOTAL	94	50	87	45	88	36

ADULT BASIC EDUCATION & WORKFORCE DEVELOPMENT

- ADULT BASIC EDUCATION ENROLLMENT BY COUNTY 3-YEAR TREND
 - ADULT EDUCATION PERCENTAGE CHANGES
- WORKFORCE DEVELOPMENT ENROLLMENT BY COURSE

Adult Basic Education Enrollment by County 3-Year Trend

County	2016-17		2017-18		2018-19	
	Obtained GED	Total Served	Obtained HSE*	Total Served	Obtained HSE*	Total Served
Bolivar	4	27	0	15	0	8
Humphreys	1	13	1	12	1	4
Leflore	6	88	13	69	8	65
Sharkey	1	7	0	5	1	3
Sunflower	9	71	13	61	7	44
Issaquena	3	81	0	37	1	26
Washington	9	237	16	274	21	172
Other	0	11	4	14	3	14
TOTAL	33	535	47	487	42	336

*HSE = High School Equivalency

Source: Office of Adult Education, August 2019

Adult Education Percentage Changes

ABE who move one level to the next in one fiscal year		
2018	2019	Percentage Change (per Enrollment)
164	132	+1.5%
ASL students who pass the HSE		
2018	2019	Percentage Change
24	0	-100%
Participants	Participants	Percentage Change
2018	2019	
50	1	-98%

Source: Office of Adult Education, August 2019

Workforce Development Enrollment by Course 2018-19

Course	2018-19
Air Conditioning, Refrigeration, Heating	21
Banking Skills	807
Blueprint Reading	65
Computer Use & Application	572
Construction	14
Customer Service	205
Electricity	68
Electronics	0
Employability/Remediation	2159
Entrepreneurial	0
Food Production	437
GIS/GPS	4
Heavy Machine Operation	87
Housekeeping	0
Industrial Maintenance	2
Industrial Production	17
Law Enforcement	92
Industrial Math/Precision Measurement	81
Medical Healthcare	4766
Oral Communication	0
Personal Development	111
Quality	82
Safety	274
Supervision/Leadership	175
Team Management	1
Train-The -Trainer	2
Hydraulics	3
Welding	60
TOTAL	10,105

Source: Office of Workforce Education

COLLEGE ADVANCEMENT

- STATEMENT OF FINANCIAL POSITION: MDCC DEVELOPMENT FOUNDATION, INC.
- STATEMENT OF FUNCTIONAL EXPENSES: MDCC DEVELOPMENT FOUNDATION, INC.

Statement of Financial Position

Mississippi Delta Community College Development Foundation, Inc. FY2017 & FY2018

ASSETS	2018	2017
Cash	\$488,2019.18	\$348,062.17
Certificate of Deposit	167,362.07	166,579.63
Investments	1,829,363.22	1,780,027.51
Unconditional Promises to Give	180,244.21	231,450.99
Equipment (net of accumulated depreciation)	7,565.00	0.00
Total Assets	\$2,672,743.68	\$2,526,120.30
LIABILITIES		
Accounts Payable	\$385.14	\$1,746.56
NET ASSETS		
Unrestricted	\$1,229,877.61	\$1,186,971.65
Temporarily Restricted	\$1,442,480.93	\$1,337,402.09
Total Net Assets	\$2,672,358.54	\$2,524,373.74
Total Liabilities and Net Assets	\$2,672,743.68	\$2,526,120.30

Source: Office of Advancement, August 2019

Statement of Functional Expenses
Mississippi Delta Community College Development Foundation, Inc.
Year Ended June 30, 2018

	Program Services					Supporting Services	TOTALS
	Student Support & Scholarships	Alumni Activities	College Athletics	College Promotions	Instructional Support	Management & General	
Emergency Student Support	\$12,916.00	\$	\$	\$	\$	\$	\$12,916.00
Scholarships	114,100.00						114,100.00
Special Events		12,888.00		13,553.29			26,441.29
Awards		1,245.45					1,245.45
Accreditation Support & Graduation					10,596.00		10,596.00
Softball Program Support			5,439.31				5,439.31
Baseball Program Support			4,851.00				4,851.00
Student Book Loan Program	5,465.68						5,465.68
Faculty & Staff Prof. Develop.					7,763.00		7,763.00
College Marketing & Publicity				4,947.89			4,947.89
Faculty & Staff Recognition					2,058.00		2,058.00
Health Science Prog. Support					4,294.00		4,294.00
Scholarship Database Subscription & Support					10,428.00		10,428.00
Student Recruiting & Orientation				9,285.00			9,285.00
Operating Supplies						9,479.41	9,479.41
Travel						3,243.00	3,243.00
Professional Fees						7,992.00	7,992.00
Insurance						3,458.00	3,458.00
Investment Management Fees						9,534.97	9,534.97
Depreciation						1,891.25	1,891.25
Dues & Memberships						1,588.00	1,588.00
Postage & Communications						3,611.00	3,611.00
TOTALS	\$132,481.68	\$14,133.45	\$10,290.31	\$27,786.18	\$35,139.00	\$40,797.63	\$260,628.25

Source: Office of Advancement, August 2019